



COBALT BOATS
2011

CONTENTS:

| | |
|-----------------------------------------|--------|
| Introduction | pg. 1 |
| Cobalt Boats | pg. 2 |
| Finely Detailed Craftsmanship | pg. 4 |
| Customer Inspired Innovation | pg. 6 |
| Performance Beyond Speed | pg. 8 |
| Warranty | pg. 10 |

10 SERIES

| | |
|---------------------|--------|
| Model 200 | pg. 12 |
| Model 210 | pg. 14 |
| Model 230 | pg. 16 |

WSS WATER SPORTS SERIES

| | |
|----------------------|--------|
| WSS Models | pg. 18 |
|----------------------|--------|

BR SERIES

| | |
|---------------------|--------|
| Model 222 | pg. 20 |
| Model 232 | pg. 24 |
| Model 242 | pg. 28 |
| Model 262 | pg. 32 |
| Model 276 | pg. 36 |
| Model 296 | pg. 40 |
| Model 302 | pg. 44 |

A SERIES

| | |
|---------------------|--------|
| Model A25 | pg. 48 |
|---------------------|--------|

3 SERIES

| | |
|---------------------|--------|
| Model 243 | pg. 52 |
| Model 303 | pg. 56 |
| Model 323 | pg. 60 |

| | |
|------------------------------------------|--------|
| Color Selections | pg. 64 |
| Power Options | pg. 65 |
| Standard and Optional Equipment. | pg. 66 |
| Cobalt Sports. | pg. 72 |



COBALT BOATS

*W*e understand the relationship between boats and their owners, the particular nature of a product whose principal function is to introduce families to a lifestyle. And to each other.

So we build these boats by heart. "Come ready to work. Do the job. Continue to improve. Recognize the achievements of others. Have some fun."

Simple as that.

For almost 50 years we have refused to concede a single element of our boats' performance or long-term value. We have given over our hearts and minds to the engagement of the hearts and minds of our customers, an endeavor in which we have compromised exactly nothing.

Because we build Cobalts as we do, our boats become deeply personal possessions. Places apart where a more open, more intimate easiness holds sway. Little houses really.

Own a Cobalt.

And make your way home.

COBALT BOATS OF NEODESHA, KANSAS

*M*emories are conceived around here.

In the ideas for innovation and improvement which inform our boats, Cobalt is crafting the wherewithal of a lifestyle.

Since 1968, we've aspired to greatness, refusing to compromise, trusting always in the hands, minds, and hearts of the remarkable people who build these boats. These associates of ours represent multiple generations of families, Wilson County families, with grandfathers and granddaughters working together in building a boat just for you. Equal parts creativity and craftsmanship, this rich intermixture of relatives and friends have agreed on a standard to which they, one to one, hold themselves. They, and they alone, will decide when a boat is good enough to be a Cobalt.

Let's remember too our Cobalt dealers around the world, our partners whose fierce integrity underpins your experience of ownership, whose resources and whose attitudes will ultimately determine your satisfaction with a product that, leaving Neodesha, is the very best it can be.


The big abstractions matter: "quality," "innovation," "service." But we understand that such words find meaning in the ten thousand daily completions of small, carefully defined tasks. Quality begins in the integrity of a wiring circuit. Innovation is subsumed in the first flicker of an idea for a better brace for a windshield. Service is a phone call.

Preoccupation with the tiniest of details leads to the broadest sorts of recognition -- of our customers' satisfaction, their full intention of buying another Cobalt, as documented by the most demanding, most prestigious awards for manufacturing excellence. But we design and craft these boats to an even more telling, more intimate measurement. To a standard that you will now decide.

Family times lie just ahead.

And it's your turn to make some memories.



Compromise  Nothing
THROUGH THESE DOORS WALK
THE FINEST BOAT BUILDERS IN THE WORLD



Through these doors ...



FINELY DETAILED CRAFTSMANSHIP

INTERIORS PERSONALLY CRAFTED

Long a hallmark of Cobalt construction, our interiors speak of timeless good taste, a subtle elegance made possible only by hand-craftsmanship, by design that anticipates the needs and wishes of its users. Please be seated.



- ☉ Hand-sewn interior details
- ☉ Double-needle stitching
- ☉ The warmth and feel of premium materials
- ☉ A hand-crafted helm with detailed stitching
- ☉ Real wood trim

COMFORTABLE VERSATILITY. VERSATILE COMFORT.

Cobalt owners consistently challenge us to build more and more versatility into each new model. And this year we've responded with model choices that invite you to configure cockpit and bow seating to suit your exact needs. Versatility that, for example, converts seats to a sun lounge, all-around comfort with your choice of additional seating or more floor space in the bow.

SUPERIOR FOUNDATIONAL CONSTRUCTION

Cobalt fiberglass includes a proprietary barrier coat for improved cosmetics and blister resistance. Instead of wood, with its potential for deterioration, a honeycomb composite core optimizes strength-to-weight ratio, sound deadening and corrosion resistance. Other builders content with decals, Cobalt molds all graphics into the fiberglass.

- ☉ A Cobalt exclusive, this strengthening, protective barrier coat in the hull
- ☉ Completely hand-laid hulls, reinforced with Kevlar™
- ☉ Composite construction on all structural components
- ☉ Cushioned lids with knuckled hinges for easy, open access to storage compartments large and larger still
- ☉ Exceptional hardware, largely stainless, over-sized, over-strong
- ☉ Graphics deep and untouched in the gelcoat



*Do it right
every time.*



CUSTOMER INSPIRED INNOVATION

SWIM PLATFORM FUNCTIONALITY



Cobalt swim platforms are large, welcoming and safe, suspended low, just above the waterline for easy use all around. Oversized, polished stainless steel tubing wraps every platform to protect the boat around the docks and to proffer a waiting hand-hold for swimmers, now safely away from the boat's propeller.

Select models this year will bring along the new swim step, an innovation so simple, so strong that a patent pends on its design. Ready to create even safer, ever more memorable fun at anchor, the swim step requires only two easy flips: down to use, back to stow.

INDUSTRY FIRSTS AND REAL-WORLD SOLUTIONS: A COBALT TRADITION

Across five decades, Cobalt brought innovative functionality to the marketplace. Across five decades, other marine manufacturers have seen fit to copy the thoughtful design that has always defined our boats. Again this year, we will show an entire industry exactly the way to go.

- ☉ A Cobalt first: the integrated bow eye with a scuff plate for protection from trailer marks
- ☉ The direct result of owner feedback: a stainless steel ski tow which pops out from its flush stowed position
- ☉ Stainless-steel adjustable poles to secure and tighten bimini tops with our innovative built-in turnbuckle -- no fabric straps here
- ☉ An auto-retraction system for dock lines to keep them ready and right there
- ☉ A quick-release system for fenders -- preset the fenders and pop them into a stainless steel fitting instantly
- ☉ Cushioned storage lids with knuckled hinges to hold the lids open for easy access to the compartment below
- ☉ Our often-imitated, never-duplicated flip-lip seat bolster -- the captain sits high and comfortable, enjoying the full thrill of the ride
- ☉ A safer latch for the windshield walkthrough, holding the door securely open -- yet another Cobalt first
- ☉ Perhaps the most imitated component of performance in the boating industry,
- ☉ Cobalt's extended running surface for quicker planing, firm and true turns, minimized bow rise, and greater lift at the stern



*A lifetime
of quality time.*



PERFORMANCE BEYOND SPEED

SAFETY FIRST, SAFETY LAST, SAFETY ALWAYS

Ride easy knowing that your family's day on the water is safe and secure. Every Cobalt cruises with taller hull sides for a stable, dry ride in rougher water. Underway, little ones nestle down in deep bow and cockpit seating. At anchor in a favorite cove, the extended swim platform protects swimmers at water level, well away from the drive unit, a strong hand-hold, right there.

- ☉ High freeboard
- ☉ Deep bow and cockpit seating
- ☉ Protection for the drive unit
- ☉ Oversized, stainless-steel hardware
- ☉ A much drier ride in rough water

HULLS DESIGNED FOR A SMOOTH, IMPOSSIBLY SMOOTH RIDE

Where the big water slaps hard, when the waves pound like asphalt, the hull defines the boat. Over the years, Cobalt hulls have stood for unrivaled comfort and prompt responsiveness, elements that speak to a relaxed and relaxing meaning of "ride." Go for a test drive.

Your perceptions of what a boat can be will be changed forever.

- ☉ Deep deadrise at all the right locations
- ☉ The Cobalt-only extended running surface for sudden planning and tight, tight turns at speed
- ☉ Cobalt model numbers indicative of true measurements of hull length – where other manufacturers include the swim platform in their model nomenclature
- ☉ Reverse chines for a new plateau of control

HANDLING THAT JUST CANNOT BE RIVALED

Current Cobalt owners will be the first to insist on the necessity of a test drive. Only at the helm can you feel the power, the unmistakable thump of a classic Cobalt hole-shot. Only with that leather-and-stainless steering wheel in hand can you fully appreciate the ease of handling, the softest of cruises in the roughest of waters. Only from the flip-lip captain's chair can you see the smiles of family and friends enjoying a railed corner at highest speed, and then the quiet entry back to the harbor, on plane at low speed, with no bow rise.

Drive a Cobalt. And believe.

- ☉ Quick on plane with no loss of sight of the horizon
- ☉ Remaining on plane at low speed
- ☉ Effortless cornering on the rails
- ☉ Exceptional stability at high speeds



*Welcome to the
top of the world.*



COBALT TRANSFERABLE WARRANTY

See your Cobalt Dealer for written warranties detailing specific coverage information.

TEN YEAR PROTECTION

Hull & Deck Structure: Floors, stringers, bulkheads, motor mounts, transom, all deck and hull joints

FIVE YEAR PROTECTION

Engine: Internally lubricated parts

Stern Drive: Internally lubricated parts in upper and lower housings, stern drive control system: power steering pump, power steering cooler, TVM module, TVM cylinder, joystick

Intermediate Housing: Shaft, U-joints, bearings

Steering: Helm, rack, cable, pump, seals and gaskets

Power Trim: Pump, cylinders, solenoids, switches, seals and gaskets

Electrical: Alternator, voltage regulator, electronic ignition module, ignition coil, starter motor, wiper motor, engine wiring harness, courtesy lights, docking lights, battery switch, battery isolator, bow light, horn, anchor light, spotlight, blower motor, electric hatch motor and switch

Fuel Delivery: Fuel injection control units and injectors, fuel injection pump, fuel injector rails, fuel delivery pump, flame arrestor

Controls: Control box, neutral safety switch, cables

Instrumentation: Tachometer, oil pressure, volt gauge, hour meter, speedometer, engine temperature, trim gauge, fuel gauge, air/water temperature

Accessories: Air conditioner, cockpit heater, engine battery charger, compass, depth finder, transducer and wiring harness, generator, refrigerator, galley sink and faucet, shore power, stainless steel deck railings, stainless steel rubrail, stainless steel hardware, stereo/CD player, amplifier(1), dash stereo remote, trim tabs, freshwater pump, toilet, stove, microwave, windlass

Electronics: Radar, GPS, VHF radio

Non-Defect Failures: Overheating, pre-ignition, detonation, scored pistons, scored cylinders, tuliped valves, carbonized rings, heat collapsed rings, burnt valves, bent valves, warped heads, heat cracked heads and block (excludes freezing), thermostat failures, sensor failures

Additional Benefits: Choice of towing, dock side assistance, hoist and lift out or pick up and delivery. Taxes, shop supplies, lubricants, coolants, filters, spark plugs, hoses, clamps, belts, engine tuning, and lake/sea trial when necessary for a covered repair.

THREE YEAR PROTECTION

Gelcoat Finish: Protection from stress cracks, air voids or blisters

Upholstery/Canvas: Protection from defective materials or workmanship

Components: Manufactured by Cobalt

See written warranties for specific coverage information.
Coverage is subject to change and may vary outside the U.S.A.



Peace of mind



200

The newest Cobalt answers to a higher calling.



Sport Graphics, Ebony

Welcome aboard the 200, a 20-footer with major ideas about style, performance, comfort, convenience, accessibility, efficiency, spaciousness, enduring value and any other defining abstraction important to the enjoyment -- as each comes round -- of all the seasons of your life. The 200 arrives in direct response to the needs and wishes of experienced boaters, the knowledgeable people whose opinions guided its design. Every inch a Cobalt, with legendary standards of construction in place, the 200 is feature-rich and amenity-laden, with a true walk-thru entry at the transom, a multiple-use sunpad, a water-level swim platform, and fully digital instrumentation. A V6 engine powers the 200 handily, with accompanying fuel savings, but no sacrifice of heart-throbs. The sculpted hull speaks for itself. Aspire to the 200, a reflection of your very good judgment.





Terra Brown Interior with optional Water Weave carpet

SPECIFICATIONS

| | | |
|----------------------------------|------------|------------|
| Length Overall w/o Swim Platform | 19' 4" | (5.89 m) |
| Length Overall w/ Swim Platform | 20' 10" | (6.35 m) |
| Beam | 8' 4" | (2.54 m) |
| Deadrise at Transom | 20° | (20°) |
| Fuel Capacity | 40 gal. | (151 L) |
| Freshwater Capacity | 10 gal. | (38 L) |
| Bridge Clearance w/o Bimini | 3' 11" | (1.19 m) |
| Bridge Clearance w/Tower | 6' 10" | (2.08 m) |
| Draft, Drive Up | 6" | (.15 m) |
| Draft, Drive Down | 19" | (.89 m) |
| Dry Weight | 3,500 lbs. | (1,588 kg) |
| Boat Certified, Capacity | 12 persons | |

Here's a cockpit layout that cries out for conversation while creating huge blocks of storage: under the sunpad, just behind passenger seating just behind the rear facing passenger lounge – enough room for several wakeboards, skis, and scuba gear – and, fore of the windshield, stowage for lines. The unadulterated luxury that is Cobalt upholstery asserts itself from wraparound bow to the chaise lounge astern, hand-sewn and double-welted all the way. The digital gauges and dash design are sporty and new. With inviting comfort assured for captain and 9 lucky guests, the 200 shares fully in the



Cobalt tradition of bringing friends and family together.

Listen.

A buoy at the edge of open water is ringing.



Shown with optional Swim Step

210

*A thousand miles
from nowhere. At a
lake near you.*



3 Color Custom Graphics, Sunset/Sandstone

The 210 will take you exactly where you want to be with the same engineering, the identical design philosophy, the exact sort of thinking that inform the largest boats in the Cobalt line. Such is the degree of fit and finish here, the nature of the hand-craftsmanship that defines the 210. The deep and especially wide cockpit continues the strength and safety begun in the Kevlar-reinforced hull, performance-tuned for the tighter turns skiers and boarders want. The legendary Cobalt running surface does its part too, bringing the 210 quickly on plane, softening the ride.

A true aft walk-thru makes boarding safe and simple, and the low-riding swim platform affords easy entry and exit to the water. With long graceful lines and flawless gelcoat, she always catches the perfect light. The 210 looks good, looks, looks big, is big. Let's get lost.





SPECIFICATIONS

| | | |
|----------------------------------|------------|-----------|
| Length Overall w/o Swim Platform | 20' 4" | (6.20 m) |
| Length Overall w/ Swim Platform | 22' 5" | (6.83 m) |
| Beam | 8' 6" | (2.59 m) |
| Interior Cockpit Width | 89" | (2.26 m) |
| Deadrise at Transom | 20° | (20°) |
| Fuel Capacity | 40 gal. | (151 L) |
| Freshwater Capacity | 10 gal. | (38 L) |
| Bridge Clearance w/o Bimini | 4' 0" | (1.22 m) |
| Bridge Clearance w/Arch | 7' 7" | (2.31 m) |
| Draft Drive Up | 24" | (.61 m) |
| Draft Drive Down | 36" | (.92 m) |
| Dry Weight | 3850 lbs. | (1746 kg) |
| Boat Certified Capacity | 12 persons | |
| Boat Certified Capacity w/gear | 1650 lbs. | (748 kg) |



Sand Interior with Standard Carpet



WSS
Water Sports Series Compatible

230

Because nowhere in your life do you accept mediocrity.



3 Color Custom Graphics, Citron Yellow/Ebony

*B*oaters who own the 230, with its award winning fit and finish, have been proven oh so correct. Loyal to the brand, happy in their decision, these owners know exceptionalism. They know that adrenalized performance on a stable, reinforced hull means both hard-cranking turns at speed and a smooth, quiet ride through tall chop. They know their 230s have made optimal assignment of interior space – to the largest L-lounge cockpit in its class, to ease-back-and-enjoy seating, to storage that is both spacious and readily accessible. They understand the little nuances of a well-made boat. They appreciate the look and the feel of superior design and masterful craftsmanship. Like you, they demand the very best. And you are invited to join them in a casual celebration of everyday excellence.



SPECIFICATIONS

| | | |
|----------------------------------|------------|-----------|
| Length Overall w/o Swim Platform | 21' 10" | (6.65 m) |
| Length Overall w/ Swim Platform | 24' 0" | (7.31 m) |
| Beam | 8' 6" | (2.59 m) |
| Interior Cockpit Width | 89" | (2.26 m) |
| Deadrise at Transom | 20° | (20°) |
| Fuel Capacity | 50 gal. | (189 L) |
| Freshwater Capacity | 10 gal. | (38 L) |
| Bridge Clearance w/o Bimini | 4' 3" | (1.30 m) |
| Bridge Clearance w/Arch | 7' 4" | (2.24 m) |
| Draft Drive Up | 24" | (.61 m) |
| Draft Drive Down | 36" | (.91 m) |
| Dry Weight | 4150 lbs. | (1882 kg) |
| Boat Certified Capacity | 12 persons | |
| Boat Certified Capacity w/Gear | 1650 lbs. | (748 kg) |



Terra Brown Interior



WSS
Water Sports Series Compatible

WSS

WATER SPORTS SERIES
Let's Ride



Presenting the Water Sports Series, an option package designed expressly for wakeboarders. And when fused with the intrinsic advantages of traditional Cobalt models, the wakeboarding value of a sterndrive is obvious: no need to add ballast to enlarge the wake when a simple adjustment of the drive trim easily does as much.

Water Sports Tower with Bimini Top - From its heavy gauge anodized polished aluminum stock to precision machined billet fittings and joints to a fold down design, this tower is pro-athlete strong with lifelong good looks. The perfectly integrated racks to port and starboard carry your four favorite boards in complete security. Solid. Rattle free. Then with a quick release of a swivel lock the racks swing inboard for safe access. Additional options including tower speakers with high-power amplifiers, tower spotlights, and a driver's rear-view mirror expand the water sports experience.

**WSS PACKAGE AVAILABLE ON MODELS
210, 222, 230, 232, 242, 262**





| Features and Options | 210 | 222 | 230 | 232 | 242 | 262 |
|-----------------------------------------------------|-----|-----|-----|-----|-----|-----|
| Folding Water Sports Tower w/Integrated Board Racks | S | S | S | S | S | S |
| Tower Bimini Top | S | S | S | S | S | S |
| Sony Stereo System w/iPod™ Dock | S | S | S | S | S | S |
| WSS Hull Side Graphics & Black Cobalt Insignias | S | S | S | S | S | S |
| Interior Upgrade (piping colors, Badging) | S | S | S | S | S | S |
| Cruise Control (GPS) | O | O | O | O | O | O |
| Tower Speakers | O | O | O | O | O | O |
| Transom Stereo Remote | O | O | O | O | O | O |
| Tower Lights | O | O | O | O | O | O |
| Driver's Rear View Mirror | O | O | O | O | O | O |
| Premium Sound Upgrade | O | O | O | O | O | O |
| Satellite Radio | O | O | O | O | O | O |

Exterior Graphics - The look begins with a split gelcoat hull design available in any combination of standard Cobalt gelcoat colors. Then comes the chrome silver WSS hull crystal cap emblems and transom Water Sports Series badge. And for the finishing touch we're introducing new three inch black chrome COBALT insignias in an edgy chiseled style.

Interior Styling - WSS styling continues on the interior with finishing touches that include Water Sports Series badging, and a choice of color matched piping throughout the upholstery. The WSS helm with standard digital instruments, Satin dash finish, and available Perfect Pass cruise control, create the right environment to manage launch central.

**WSS PACKAGE
AVAILABLE ON MODELS:**

- 210
- 222
- 230
- 232
- 242
- 262

222

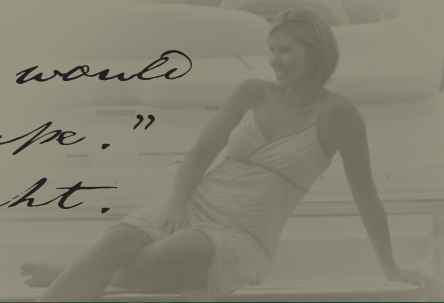
BRSERIES

LOA: 23' 7" • Beam: 8' 6" • Dry Weight: 4,100 lbs. • Fuel Capacity: 50 gals.



Sport Graphics, Mahogany

Your favorite school teacher would call it "an archetype of escape." And once again, she'd be right.



The question comes: "How best to slip away from the humdrum?" The Cobalt 222 arrives with an idea or two. Technology, first of all, with digital helm instrumentation, depth, air, and water temperature gauges, and a scrolling window on the gauge which provides a choice of vital information at a glance. The 222 argues also for room, comfortable and storable and usable room, lots of it. Convenience too, at every turn, from the ergonomics of the helm to the easy accessibility of the stepped swim platform. Looks help out as well—graceful lines flow free in the profile, while the interior form and function in a rich luster. And reliability, most of all, traditional Cobalt refusal to compromise on what matters most. Archetypes last almost forever, you know.



SPECIFICATIONS

| | | |
|----------------------------------|------------|-----------|
| Length Overall w/o Swim Platform | 21' 0" | (6.40 m) |
| Length Overall w/ Swim Platform | 23' 7" | (7.11 m) |
| Beam | 8' 6" | (2.59 m) |
| Interior Cockpit Width | 88" | (2.25 m) |
| Deadrise at Transom | 21 | (21) |
| Fuel Capacity | 50 gal. | (189 L) |
| Freshwater Capacity | 10 gal. | (38 L) |
| Bridge Clearance w/o Bimini | 4' 9" | (1.45 m) |
| Bridge Clearance w/Tower | 7' 6" | (2.29 m) |
| Draft Drive Up | 26" | (.66 m) |
| Draft Drive Down | 36" | (.91 m) |
| Dry Weight | 4100 lbs. | (1860 kg) |
| Boat Certified Capacity | 12 persons | |
| Boat Certified Capacity w/Gear | 1800 lbs. | (816 kg) |

WSS

Water Sports Series Compatible



Your escape route demands comfortable seating, especially in the bow, and the 222 responds with reclined backrests and enhanced padding in seats higher and deeper, safer and more supportive -- the high-backed captain's chairs too with their handy pockets and soothing new foams. A molded ice chest waits right there. The sunpad is expansive, waiting for a nap in the shade. Where you so obviously now have it made.



222

Sand Interior with
Optional Water Weave Carpet

232

BR SERIES

LOA: 25' 1" • Beam: 8' 6" • Dry Weight: 4,165 lbs. • Fuel Capacity: 50 gals.



Rule a runabout island of your own discovery.



Own a large and secluded locale, the perfect hideaway for family and best friends and then, as the occasion comes round, the ideal platform for full-throttle athleticism. Here's the boat for those days when getting away, in style and substance, matters most. With a welcoming cockpit configured for easy conversation and a bow that holds comfort and support to a new standard, the 232 maximizes your ability to disappear, jumping on plane almost immediately, charging across rough water with easy control, tight stability in turns, and a supersoft ride for all aboard.

And then the 232 settles at anchor in a fine and private place where a favorite song at low volume on a superior sound system suggests that here, right here is the boat you've been looking for. The boat to, right now, take you away.

BR SERIES 232

SPECIFICATIONS

| | | |
|----------------------------------|------------|-----------|
| Length Overall w/o Swim Platform | 22' 6" | (6.86 m) |
| Length Overall w/ Swim Platform | 25' 1" | (7.64 m) |
| Beam | 8' 6" | (2.59 m) |
| Interior Cockpit Width | 89" | (2.26) |
| Deadrise at Transom | 21° | (21°) |
| Fuel Capacity | 50 gal. | (189 L) |
| Freshwater Capacity | 10 gal. | (38 L) |
| Bridge Clearance w/o Bimini | 4' 9" | (1.45 m) |
| Bridge Clearance w/Arch or Tower | 7' 6" | (2.29 m) |
| Draft Drive Up | 26" | (.66 m) |
| Draft Drive Down | 36" | (.91 m) |
| Dry Weight | 4165 lbs. | (1886 kg) |
| Boat Certified Capacity | 12 persons | |
| Boat Certified Capacity w/Gear | 1800 lbs. | (816 kg) |

WSS

Water Sports Series Compatible

Double-stitched, meaningfully padded, engineered for ergonomic comfort, the 232's seating is flexible in its use, adjustable to the activity ongoing in a boat made for reliable, enjoyable performance season after season. With more cubic feet of storage than on any other boat of its size, the 232 makes alfresco entertaining simple and spontaneous.

Own the 232. And vanish.





Sand Interior with optional
Water Weave Carpet

242

BR SERIES

LOA: 25' 11" • Beam: 8' 6" • Dry Weight: 4,600 lbs. • Fuel Capacity: 50 gals.



3 Color Custom Graphics, Navy/Sandstone

Healthy objectivity and measured response have just flown right out the window.



From the day of its introduction the 242 has won loud and spontaneous “Hey, look!”s from essentially everyone who has seen it, the adulation distributed equally among Cobalt standards of ride, performance, and handsomeness. The 242 is all about access – the wide bow walkthrough doors, the laddered swim platform, and deep, wide, right-there storage -- with every square inch maximized for all-day use, as in the bow with its optional dinette table. Remember too that practicality – adjustable backrests, insulated ice chests, removable ski pylons, cylinder-assist lifting, and chair pockets – deserve its own perhaps more restrained outbursts of affection. The 242, so much more than a pretty face.



SPECIFICATIONS

| | | |
|----------------------------------|------------|-----------|
| Length Overall w/o Swim Platform | 23' 11" | (7.29 m) |
| Length Overall w/ Swim Platform | 25' 11" | (7.90 m) |
| Beam | 8' 6" | (2.59 m) |
| Interior Cockpit Width | 87" | (2.20 m) |
| Deadrise at Transom | 21 | (21) |
| Fuel Capacity | 50 gal. | (189 L) |
| Freshwater Capacity | 10 gal. | (38 L) |
| Holding Tank Capacity | 10 gal. | (38 L) |
| Bridge Clearance w/o Bimini | 5' 3" | (1.60 m) |
| Bridge Clearance w/Arch or Tower | 8' 2" | (2.49 m) |
| Draft Drive Up | 25" | (.64 m) |
| Draft Drive Down | 37" | (.94 m) |
| Dry Weight | 4600 lbs. | (2087 m) |
| Boat Certified Capacity | 13 persons | |
| Boat Certified Capacity w/Gear | 2250 lbs. | (1021 kg) |

WSS

Water Sports Series Compatible



Customize your 242 with the choice of either a cavernous port side storage compartment, or the available head compartment with fiberglass liner and door. Lounge seating speaks wraparound comfort. An aft sunpad calls in the warming rays, as bow seating doubles with available filler cushions. Meantime, the helm responds to every command with some style and some flair.



Go ahead. Let loose.



Tera Brown Interior

262

BR SERIES

LOA: 27' 7" • Beam: 8' 6" • Dry Weight: 5,425 lbs. • Fuel Capacity: 73 gals.



*Critical acclaim, success,
and a high-five from
Mikey Martinson.*



From Middle America to Melbourne the 262 has earned a reputation for enduring value, for utility right now and reliability on the long haul with a rarefied blend of convenience, comfort, luxury, and an all-important practicality. The particularly tall sides of the hull, with its reversed chines and maximized freeboard, make for a dry ride, ready to take the Mikeman and his crowd safely through what they call “rough seas,” no problem whatsoever.

And yet the 262 remains spontaneous in its easy handling, nimble in its ability to manufacture the good times of the moment, whose toys stow quickly away in the well-fitted hidden spaces of this large family boat, certified for 15 fun-lovers. All aboard will find a configuration that makes for easy traffic flow, easy conversation, easy enjoyment of a career best cannonball.



BR SERIES 262

SPECIFICATIONS

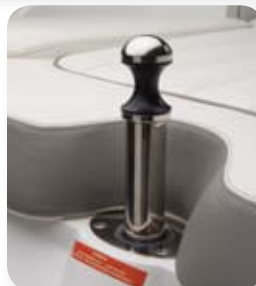
| | | |
|----------------------------------|------------|-----------|
| Length Overall w/o Swim Platform | 25' 7" | (7.80 m) |
| Length Overall w/ Swim Platform | 27' 7" | (8.41 m) |
| Beam | 8' 6" | (2.59 m) |
| Interior Cockpit Width | 89" | (2.26 m) |
| Deadrise at Transom | 21° | (21°) |
| Fuel Capacity | 73 gal. | (276 L) |
| Freshwater Capacity | 10 gal. | (38 L) |
| Bridge Clearance w/o Bimini | 5' 3" | (1.60 m) |
| Bridge Clearance w/Arch or Tower | 8' 2" | (2.49 m) |
| Draft Drive Up | 21" | (.53 m) |
| Draft Drive Down | 37" | (.94 m) |
| Dry Weight | 5425 lbs. | (2461 kg) |
| Boat Certified Capacity | 15 persons | |
| Boat Certified Capacity w/Gear | 2585 lbs. | (1173 kg) |

WSS

Water Sports Series Compatible



Open, flowing, equipped with every wishable amenity, the 262's interior sweeps away from an acre of L-lounge and adjacent sunpad, waiting for quick conversion to still another backrested seat. The side walk-thru encourages maximized traffic flow. And the options list – head compartment, a hardtop for style and protection – could not be more adult in its sophistication.





Summit Grey Interior

276

BR SERIES

LOA: 27' 6" • Beam: 8' 6" • Dry Weight: 5,500 lbs. • Fuel Capacity: 95 gals.



Three Color Custom Graphics, Ebony and Candied Red

*This boat goes fast enough
to make time stand still.*



In its combination of easy grace and masterfully channeled power, the 276 extends the definition of a large runabout in the Mediterranean cast, a transitional boat borrowing much of the style, even more of the substance of a performance cruiser. Historically, Cobalt has emphasized the all-in importance of engine power, and the big, broad choices for the 276 ensure an appropriate blend of exhilarating speed and necessary fuel efficiency.

The 276 has become a new expression of Cobalt classicism in lines that whoosh and swoop toward the fully integrated swim platform, molded into the hull, creating the illusion that this boat never really does ride at anchor. Throw away your timepieces. The 276 is at cruise.



BR SERIES 276

SPECIFICATIONS

| | | |
|----------------------------------|-----------------|-----------|
| Length Overall w/ Swim Platform | 27' 6" | (8.38 m) |
| Beam | 8' 6" | (2.59 m) |
| Interior Cockpit Width | 87" | (2.20 m) |
| Deadrise at Transom | 21 | (21) |
| Fuel Capacity | 95 gal | (360 L) |
| Freshwater Capacity | 10 gal | (37.8 L) |
| Holding Tank Capacity | 11 gal | (41.6 L) |
| Bridge Clearance w/o Bimini | 4' 11" | (1.50 m) |
| Bridge Clearance w/Arch or Tower | 6' 7" | (2.02 m) |
| Draft Drive Up | 27" | (.69 m) |
| Draft Drive Down | 39" | (.99 m) |
| Dry Weight | 5500 lbs | (2495 kg) |
| Boat Certified Capacity | Yacht Certified | |
| Boat Certified Capacity w/Gear | Yacht Certified | |



Elongated, looking longer still, the walkway extending to the anchor, the bow begins the spaciousness of the 276's yacht-certified passenger places. The entire interior proffers subtle distinctions quietly achieved: double-needle diamond stitchery, colors richer, the vinyls softer, more tactile. Optional teak. Timeless artistry all but everywhere.





Terra Brown Interior with optional Water Weave Carpet

296

BR SERIES

LOA: 30' 2" • Beam: 9' 5" • Dry Weight: 7,350 lbs. • Fuel Capacity: 123 gals.



*A boat for people who pay
much more attention to the
calendar than to the clock.*



For all the seasons of your life comes the 296, stout and authoritative, eager for open water, athletic in its movements, robust in the softness of its ride. In this marriage of straight ahead power and responsive handling, the 296 achieves a remarkable comfort from the deep gunwales of the bow aft. The seating's layout here is essentially unlike any other bowrider's, more limousine than marine, made for light conversation at any speed. Such civilized stuff arises from hidden strength, of course: from a Kevlar™ back keel and chines, from a floor cored with honeycomb composite, from a wind-block door made of Lexan™, from all the kept promises of Cobalt's celebration of lasting value.

With either twin or single-engine setup, the 296 will deliver performance matched to the day's journey. To living in the joys of this place. This time.



BR SERIES 296

SPECIFICATIONS

| | | |
|---------------------------------|-----------------|-----------|
| Length Overall w/ Swim Platform | 30' 2" | (9.19 m) |
| Hull Length | 28' 5" | (8.69 m) |
| Beam | 9' 5" | (2.90 m) |
| Interior Cockpit Width | 8' 8" | (2.64 m) |
| Deadrise at Transom | 21 | (21) |
| Fuel Capacity | 123 gal | (457 L) |
| Freshwater Capacity | 18 gal | (68 L) |
| Holding Tank Capacity | 18 gal | (68 L) |
| Bridge Clearance w/o Bimini | 4' 11" | (1.49 m) |
| Bridge Clearance w/Arch | 7' 11" | (2.41 m) |
| Draft Drive Up, Single Eng. | 25" | (63.5 cm) |
| Draft Drive Down, Single Eng. | 37" | (93.9 cm) |
| Draft Drive Up, Twin Eng. | 27" | (68.6 cm) |
| Draft Drive Down, Twin Eng. | 39" | (99 cm) |
| Dry Weight, w/Single Engine | 7350 lbs | (3334 kg) |
| Dry Weight, w/Twin Engines | 8740 lbs | (3964 kg) |
| Boat Certified Capacity | Yacht Certified | |
| Boat Certified Capacity w/Gear | Yacht Certified | |

Those family-room pillows astern with their all-weather ease grab major attention in the 296 interior, as do the rear facing seats a few feet forward. Meaningful options – a refrigerator perhaps or joystick docking, maybe a bimini top – will then make the 296 uniquely yours. And that serviceable dinette table mounts in the cockpit as well, versatile and to the point. Like your own quite precise long-term thinking.



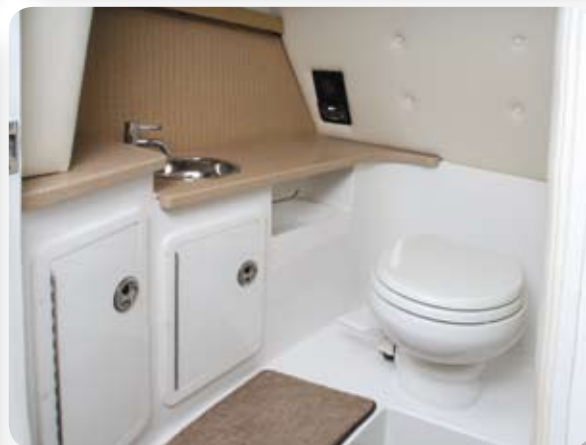
Standard Interior with Outdoor Cloth Cushions



Optional Galley



Optional Vinyl Back Cushions



STANDARD 296 STANDARD INTERIOR WITH OUTDOOR CLOTH CUSHIONS



Terra Brown Interior with
Optional Water Weave Carpet

OPTIONAL 296 CLUB INTERIOR



Sand Interior with Optional
Water Weave Carpet

302

LOA: 31' 6" • Beam: 9' 11" • Dry Weight: 9,880 lbs. • Fuel Capacity: 150 gals.



*Other boat owners
must have been given
a placebo.*



*T*hus far we've been unable to account for the feeling, the euphoria surrounding everything 302. Maybe it's the sheer spaciousness of the thing, the round-the-clock room for entertaining, the large and thoughtfully placed storage for an endless afternoon's cruise. Perhaps it's the sheer and effortless power of the largest bowrider in the line. Maybe it's the time-honored touches of pure Cobalt luxury punctuating a design calculated, stem to stern, to bring family and friends together. In any case, with the largest cockpit in its class -- accommodating 14 friends in easy relaxation -- a sunlounge atop the engine hatch large enough for side-by-side tanning, and a big, big bow with seats that establish new standards of forward comfort, the 302 ensures season after season of healthy outdoor living.



BR SERIES 302

SPECIFICATIONS

| | | |
|----------------------------------|-----------------|-----------|
| Length Overall w/o Swim Platform | 29' 9" | (9.07 m) |
| Length Overall w/ Swim Platform | 31' 6" | (9.60 m) |
| Beam | 9' 11" | (3.02 m) |
| Interior Cockpit Width | 8' 8" | (2.64 m) |
| Deadrise at Transom | 22 | (22) |
| Fuel Capacity | 150 gal. | (568 L) |
| Freshwater Capacity | 30 gal. | (114 L) |
| Holding Tank Capacity | 10 gal. | (37.8) |
| Bridge Clearance w/o Bimini | 5' 9" | (1.75 m) |
| Bridge Clearance w/Arch or Tower | 8' 6" | (2.59 m) |
| Draft Drive Up | 26" | (.66 m) |
| Draft Drive Down | 44" | (1.12 m) |
| Dry Weight | 9880 lbs. | (4481 kg) |
| Boat Certified Capacity | Yacht Certified | |
| Boat Certified Capacity w/Gear | Yacht Certified | |



Just what Doctor Frolic ordered: a galley with a Corian counter and stainless sink, stereo speakers molded at precise angles for ideal acoustics, the look and feel of fine furniture – and in command of it all a helm with a doublewide captain's seat with a bolster and foot and armrests, Garmin GPS and Livorsi controls standard.

Say aaaaah and oooooh indeed.





Sand Interior

A25

A SERIES

LOA: 25' 6" • Beam: 8' 6" • Dry Weight: 5,125 lbs. • Fuel Capacity: 50 gals.



An icon in the making, a classic already coming of age, and eight hours with not one care in the world.



The A25 broke some molds in its design and construction. Five of them, in fact. The A25's hull required a five-piece mold to make, a no-shortcuts exercise in hand craftsmanship leading to lines at once inverse, elegant, and unprecedented. The A25 represents genuine innovation, deep-down improvements far beyond a glamorous first impression. The A25's design creates the running surface of a much larger boat, with consequent reduced bowrise at acceleration, more stability in turns, and even more comfort at cruise for all aboard. Knowledgeable boaters will recognize the new features specific to more enjoyable days on the water, from the available deployable swim platform and transom speakers to the digital instrumentation at the helm, from easier access at the stern to all new, from easier access at the stern to all-new fender storage forward. Know the guiding hand of Cobalt imagination. On a maiden voyage. In years of reliable, worry-free fun.



A25

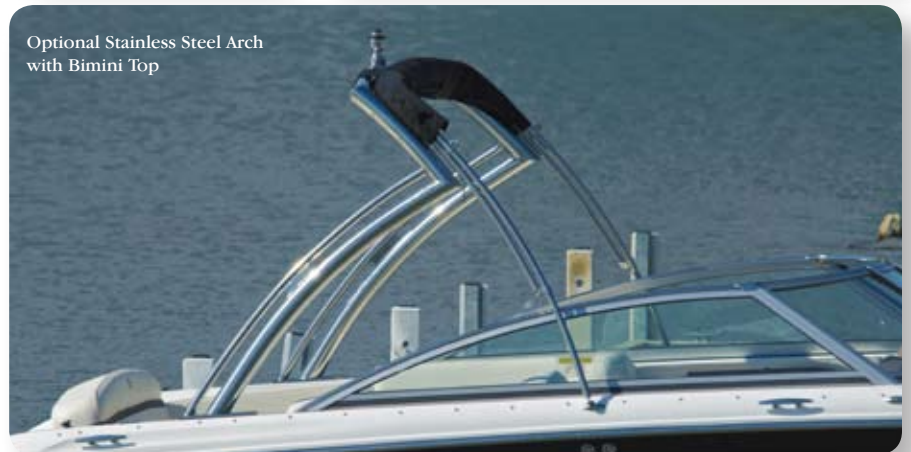
SPECIFICATIONS

| | | |
|---------------------------------|------------|-----------|
| Length Overall w/ Swim Platform | 25' 6" | (7.77 m) |
| Beam | 8' 6" | (2.59 m) |
| Interior Cockpit Width | 89" | (2.26 m) |
| Deadrise at Transom | 21° | (21°) |
| Fuel Capacity | 50 gal. | (189 L) |
| Freshwater Capacity | 10 gal. | (38 L) |
| Bridge Clearance w/o Bimini | 4' 11" | (1.50 m) |
| Bridge Clearance w/Tower | 8' 2" | (2.49 m) |
| Draft, Drive Up | 30" | (.76 m) |
| Draft, Drive Down | 39" | (.99 m) |
| Dry Weight | 5,125 lbs. | (2325 kg) |
| Boat Certified, Capacity | 15 persons | |
| Boat Certified, Capacity w/Gear | 2,065 lbs. | (937 kg) |



Iconic design in a smart outdoor living area. Integrated extra-wide seating with ergonomic support and clever flip-out seating in the bow. Hand-crafted upholstery with double-welting pleating and diamond stitching. A three-position backrest on the sunpad for tanning at anchor and additional seating at cruise. All-LED cockpit lighting.

The world seems a very far away place.



Optional Stainless Steel Arch with Bimini Top



Terra Brown Interior

243

3SERIES
SPORT COUPE

LOA: 25' 11" • Beam: 8' 6" • Dry Weight: 4,850 lbs. • Fuel Capacity: 50 gals.



*Welcome, hopeless romantics
and calculating financial types.*



*S*plendid but splendid in its personality, the 243 becomes a study in both long-term value and immediate gratification. The 243's appeal to the emotions is obvious in its graceful beauty, its luxury afloat in the comfort, the convenience of amenities chosen for enjoyment pure and simple. The 243's embrace of enduring value comes in combining spread-out spaciousness for captain and crew with ubiquitous storage, easy movement stem to stern, and a masterpiece of a sliding companionway door that enables both wide-open access to the cabin and a separate cockpit entrance to the head compartment, itself roomy and well-optioned. Here is a boat bringing sumptuous textures and well-dressed surfaces together with hard functionality in the newish suggestion that cuddy owners really can have it all.

And again this evening, a CFO dances the night away.



243

SPECIFICATIONS

| | | |
|----------------------------------|------------|-----------|
| Length Overall w/o Swim Platform | 23' 11" | (7.29 m) |
| Length Overall w/ Swim Platform | 25' 11" | (7.90 m) |
| Beam | 8' 6" | (2.59 m) |
| Interior Cockpit Width | 87" | (2.20 m) |
| Deadrise at Transom | 21 | (21) |
| Fuel Capacity | 50 gal. | (189 L) |
| Freshwater Capacity | 10 gal. | (38 L) |
| Holding Tank Capacity | 10 gal. | (38 L) |
| Bridge Clearance w/o Bimini | 5' 3" | (1.60 m) |
| Bridge Clearance w/Arch or Tower | 8' 2" | (2.49 m) |
| Draft Drive Up | 25" | (.64 m) |
| Draft Drive Down | 37" | (.94 m) |
| Dry Weight | 4850 lbs. | (2200 kg) |
| Boat Certified Capacity | 13 persons | |
| Boat Certified Capacity w/Gear | 2000 lbs. | (907 kg) |



The cockpit an entertainment center and the cabin a private retreat, the 243 means appointments rich and thoughtful, with a set of options that maximize value: a dinette table, filler cushions, a television and DVD player, a heater, terry-cloth seat covers – whatever a boating poet might ask, all that an accountant might find, a decade down the river, worthwhile.





Terra Brown Interior with
Optional Water Weave Carpet

303

3SERIES
SPORT COUPE

LOA: 31' 6" • Beam: 9' 11" • Dry Weight: 11,110 lbs. • Fuel Capacity: 150 gals.



*Five decades in the making.
Five minutes in the
understanding.*



In so many ways the 303 represents the culmination of Cobalt's nearly fifty years in boat-building, such as the 303's fusion of purpose and style in a new paradigm of luxury, performance, and quiet efficiency. Responsive, agile, its power effortlessly managed, the 303 announces itself as a boat made for entertaining, a go-anywhere do-anything study in days well spent. With all the comforts, all the conveniences appropriate to the best evenings away from home, the 303 uses every square inch of its spaciousness in the service of easy enjoyment becoming beautifully functional and functionally complete. The 303 goes to sea with all the time-honored, the now expected distinctions of Cobalt construction. And therein lies the understanding that, again this voyage, all will be well.



303

SPECIFICATIONS

| | | |
|----------------------------------|-----------------|-----------|
| Length Overall w/o Swim Platform | 29' 9" | (9.07 m) |
| Length Overall w/ Swim Platform | 31' 6" | (9.60 m) |
| Beam | 9' 11" | (3.02 m) |
| Interior Cockpit Width | 8' 8" | (2.64 m) |
| Deadrise at Transom | 22° | (22°) |
| Fuel Capacity | 150 gal. | (568 L) |
| Freshwater Capacity | 30 gal. | (114 L) |
| Holding Tank Capacity | 30 gal. | (114 L) |
| Bridge Clearance w/o Bimini | 5' 9" | (1.75 m) |
| Bridge Clearance w/Arch or Tower | 8' 2" | (2.49 m) |
| Draft Drive Up | 26" | (.66 m) |
| Draft Drive Down | 44" | (1.12 m) |
| Dry Weight | 11,110 lbs | (5039 kg) |
| Boat Certified Capacity | Yacht Certified | |
| Boat Certified Capacity w/Gear | Yacht Certified | |



The 303's cockpit fans out in wraparound welcome, a bimini top standard as are the refrigerator and sink. Passenger seats face forward, cabin seats aft, thereby pulling guests together in easy conversation, the revolutionary Cobalt hull keeping things quiet at cruise. Cabin access is wide and then some, rest and relaxation waiting just below with cedar in the lockers, fine-grain leathers in the seating, and at home sorts of comfort in the enclosed head unit and its shower. The 303 sleeps two in all-night soundness, while clever placement affords stand-up-straight room at the galley. Mirrors accent the roominess, with real headroom – enough for six-plus-footers – in the seating. An optional flat-screen TV/DVD completes the picture.



Rest easy. Rest in the certain knowledge that, as has been the case since 1968, Cobalt boat builders have fully anticipated your arrival.





Sand Interior



323

3SERIES
SPORT CRUISERS

LOA: 32' 10" • Beam: 10' 7" • Dry Weight: 12,300 lbs. • Fuel Capacity: 174 gal.



*The principal motivating
force behind its design?
Zest for life, of course.*



The 323 does indeed cruise in exuberant celebration of unforgettable hours spent with those who matter most. A thoughtful blending of the visceral – controlled, stable, right-now turns at 50 mph – and the cerebral – the space-enhancing design of the windshield, for example – the 323 melds luxury with safety, performance with efficiency, and practicality with astonishing style in a boat designed to draw and then to entertain a crowd. A deep, ridiculously long cockpit wraps around guests, while cavernous storage waits for their every need. Meanwhile, the 323's cabin invites quiet retreat for a couple's alone-time or for a foursome's out-loud game of bridge. From a wet bar to a swim platform which doubles as such, from stainless-steel fixtures to lighting that makes a mood, the 323 comes with but two words to say.



“Live on.”

323

SPECIFICATIONS

| | | |
|----------------------------------|-----------------|-----------|
| Length Overall w/o Swim Platform | 32' 10" | (10.00 m) |
| Length Overall w/ Swim Platform | 34' 9" | (10.59 m) |
| Beam | 10' 7" | (3.23 m) |
| Interior Cockpit Width | 9' 0" | (2.74 m) |
| Deadrise at Transom | 22° | (22°) |
| Fuel Capacity | 174 gal. | (659 L) |
| Freshwater Capacity | 18 gal | (68 L) |
| Holding Tank Capacity | 28 gal. | (106 L) |
| Bridge Clearance w/o Bimini | 6' 5" | (1.96 m) |
| Bridge Clearance w/Arch or Tower | 8' 10" | (2.69 m) |
| Draft Drive Up | 24" | (.61 m) |
| Draft Drive Down | 35" | (.90 m) |
| Dry Weight | 12300 lbs. | (5579 kg) |
| Boat Certified Capacity | Yacht Certified | |
| Boat Certified Capacity w/Gear | Yacht Certified | |



Boating magazine wrote, at its introduction, that the 323 "may be the best dayboat ever." And why not? The 323 anticipates every wish: a sunpad with three-way use, high-end appliances, a hidden flip-out table, a huge leathered V-lounge, a head with shower and sink, and a helm station aeronautical in its precision and control. Hello, world.



2011 COLOR SELECTIONS

Consult your Cobalt dealer as equipment and specifications are subject to change without notice. Graphics shown do not apply to the WSS models.

GELCOAT AND GRAPHICS



From the clean crisp look of all white to the richness of three color custom the gelcoat is a principal ingredient of these boats' beauty, a principal determinant of a Cobalt's appearance and enduring value. Cobalt's gelcoat offers superior repairability, matchless clarity, and high-gloss buff back, with blister resistance far superior to standard gelcoats. Greater flexibility in the gelcoat reduces cracking. A comprehensive three-year warranty guarantees the gelcoat finish against stress cracks, air voids, and blisters.

3 COLOR CUSTOM GRAPHICS

White base gelcoat with any primary hull color plus an accent. Available on all models.



SPORT GRAPHICS

A white hull with a single accent stripe. Available on all models.



3 COLOR CUSTOM WITH DECK STRIPE

3 Color Custom with the addition of a deck stripe. Available on the 222, 232 only.



SPORT WITH DECK STRIPE

A white hull with a single accent stripe and deck stripe. Available on the 222, 232 only.



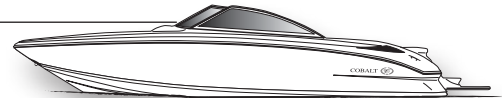
CLASSIC GRAPHICS

One primary hull color with an all white deck. Available on all models.



ALL WHITE

An all white hull and deck. Available on all models.



CLASSIC WITH DECK STRIPE

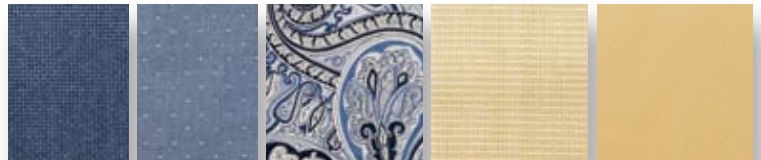
One primary hull color with a deck stripe. Available on the 222, 232 only.



CABIN INTERIORS

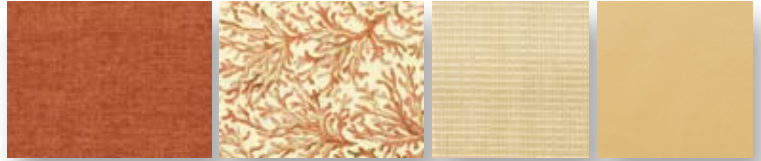
COASTAL BLUE

Available on models 243, 303, 323



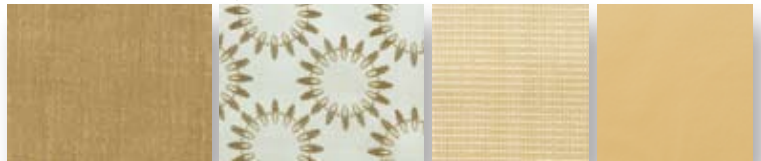
OCEAN CORAL

Available on models 243, 303, 323



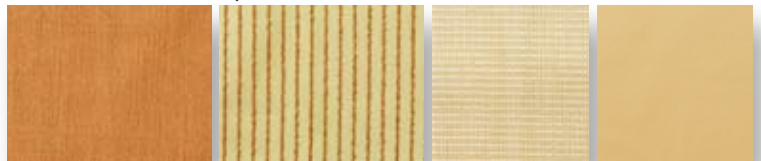
SEA SPRAY

Available on model 243 only



SUNSET

Available on model 243 only



COCKPIT INTERIORS

SAND INTERIOR

with standard carpet



WATER WEAVE

carpet option



TERRA BROWN INTERIOR

with standard carpet



WATER WEAVE

carpet option




SUMMIT GREY INTERIOR


available with standard carpet only



2011 STERNDRIVE POWER OPTIONS


Consult your Cobalt dealer as equipment and specifications are subject to change without notice.

|  | | | 10 SERIES | | | BR SERIES | | | | | | |
|-----------------------------------------------------------------------------------|---------|---------|-----------|-----|-----|-----------|-----|-----|-----|-----|-----|-----|
| | | | 200 | 210 | 230 | 222 | 232 | 242 | 262 | 276 | 296 | 302 |
| MERCUISER POWER | | | | | | | | | | | | |
| 4.3 L MPI Alpha ECT | 220 php | 164 PkW | 0 | 0 | | | | | | | | |
| 4.3 L MPI B3 ECT | 220 php | 164 PkW | 0 | 0 | | | | | | | | |
| 5.0 L MPI Alpha ECT | 260 php | 194 PkW | 0 | 0 | | 0 | | | | | | |
| 5.0 L MPI Bravo 3 ECT | 260 php | 194 PkW | 0 | 0 | | 0 | | | | | | |
| 350 Mag MPI Bravo 3 ECT | 300 php | 224 PkW | 0 | 0 | | 0 | 0 | 0 | | | | |
| 377 Mag MPI Bravo 3 ECT | 320 php | 239 PkW | | | 0 | 0 | 0 | 0 | 0 | | | |
| 8.2 Mag Bravo 3 ECT | 380 php | 283 PkW | | | 0 | 0 | 0 | 0 | 0 | 0 | | |
| 8.2 Mag HO Bravo 3 ECT | 430 php | 321 PkW | | | 0 | 0 | 0 | 0 | 0 | 0 | | |
| Twin 350 Mag MPI Bravo 3 ECT | 300 php | 224 PkW | | | | | | | | | 0 | 0 |
| Twin 377 Mag MPI Bravo 3 ECT | 320 php | 239 PkW | | | | | | | | | 0 | 0 |
| Twin 8.2 Mag Bravo 3 ECT | 380 php | 283 PkW | | | | | | | | | 0 | 0 |
| Twin 8.2 Mag HO Bravo 3 ECT | 430 php | 321 PkW | | | | | | | | | 0 | 0 |
| VOLVO PENTA POWER | | | | | | | | | | | | |
| 4.3 GXi DP (non catalyst) | 225 php | 168 PkW | 0 | 0 | | | | | | | | |
| 4.3 GXi SX (non catalyst) | 225 php | 168 PkW | 0 | 0 | | | | | | | | |
| 5.0 GXiC DP | 270 php | 201 PkW | 0 | 0 | | 0 | | | | | | |
| 5.0 GXiC SX | 270 php | 201 PkW | 0 | 0 | | | | | | | | |
| 5.7 GiC DP | 300 php | 224 PkW | 0 | 0 | | 0 | 0 | | | | | |
| 5.7 GXiC DP | 320 php | 239 PkW | | | 0 | 0 | 0 | 0 | | | | |
| 8.1 Gi DP (non catalyst) | 375 php | 280 PkW | | | 0 | 0 | 0 | 0 | 0 | 0 | | |
| 8.1 GiC DP | 400 php | 298 PkW | | | 0 | 0 | 0 | 0 | 0 | 0 | | |
| 8.1 GXi DP (non catalyst) | 420 php | 313 PkW | | | 0 | 0 | 0 | 0 | 0 | 0 | | |
| Twin 5.7 GiC DP | 300 php | 224 PkW | | | | | | | | | 0 | 0 |
| Twin 5.7 GXiC DP | 320 php | 239 PkW | | | | | | | | | 0 | 0 |
| Twin 8.1 Gi DP (non catalyst) | 375 php | 280 PkW | | | | | | | | | 0 | 0 |
| Twin 8.1 GiC DP | 400 php | 298 PkW | | | | | | | | | 0 | 0 |
| Twin 8.1 GXi DP (non catalyst) | 420 php | 313 PkW | | | | | | | | | 0 | 0 |
| ENGINE OPTIONS | | | | | | | | | | | | |
| Anti Corrosion System | | | 0 | 0 | 0 | 0 | 0 | 0 | | | 0 | 0 |
| Axius Basic (includes DTS) - Merc | | | | | | | | | | | 0 | |
| Axius Premier (includes DTS) - Merc Twin | | | | | | | | | | | | 0 |
| DTS (Merc) | | | 0 | 0 | 0 | 0 | 0 | 0 | 0 | 0 | 0 | 0 |
| EVC (Volvo) | | | 0 | 0 | 0 | 0 | 0 | 0 | 0 | 0 | 0 | 0 |
| Joystick Sterndrive (includes EVC) - Volvo Twin | | | | | | | | | | | 0 | 0 |
| Ocean-X (Volvo) | | | 0 | 0 | 0 | 0 | 0 | 0 | 0 | 0 | 0 | 0 |
| Seacore (Merc) | | | 0 | 0 | 0 | 0 | 0 | 0 | 0 | 0 | 0 | 0 |

|  | | | A SERIES | | 3 SERIES | | WISSER SERIES | | | | | | |
|-------------------------------------------------------------------------------------|---------|---------|----------|-----|----------|-----|---------------|--------|--------|--------|--------|--------|---|
| | | | A25 | 243 | 303 | 323 | 210wss | 222wss | 230wss | 232wss | 242wss | 262wss | |
| MERCUISER POWER | | | | | | | | | | | | | |
| 4.3 L MPI Alpha ECT | 220 php | 164 PkW | | | | | 0 | | | | | | |
| 4.3 L MPI B3 ECT | 220 php | 164 PkW | | | | | 0 | | | | | | |
| 5.0 L MPI Alpha ECT | 260 php | 194 PkW | | | | | 0 | | | | | | |
| 5.0 L MPI Bravo 3 ECT | 260 php | 194 PkW | | | | | 0 | 0 | | | | | |
| 350 Mag MPI Bravo 3 ECT | 300 php | 224 PkW | 0 | 0 | | | 0 | 0 | 0 | 0 | 0 | | |
| 377 Mag MPI Bravo 3 ECT | 320 php | 239 PkW | 0 | 0 | | | | 0 | 0 | 0 | 0 | 0 | |
| 8.2 Mag Bravo 3 ECT | 380 php | 283 PkW | 0 | 0 | | | | | 0 | 0 | 0 | 0 | |
| 8.2 Mag HO Bravo 3 ECT | 430 php | 321 PkW | 0 | 0 | | | | | 0 | 0 | 0 | 0 | |
| Twin 350 Mag MPI Bravo 3 ECT | 300 php | 224 PkW | | | 0 | 0 | | | | | | | |
| Twin 377 Mag MPI Bravo 3 ECT | 320 php | 239 PkW | | | 0 | 0 | | | | | | | |
| Twin 8.2 Mag Bravo 3 ECT | 380 php | 283 PkW | | | 0 | 0 | | | | | | | |
| Twin 8.2 Mag HO Bravo 3 | 430 php | 321 PkW | | | 0 | 0 | | | | | | | |
| VOLVO PENTA POWER | | | | | | | | | | | | | |
| 4.3 GXi DP (non catalyst) | 225 php | 168 PkW | | | | | 0 | | | | | | |
| 4.3 GXi SX (non catalyst) | 225 php | 168 PkW | | | | | 0 | | | | | | |
| 5.0 GXiC DP | 270 php | 201 PkW | | | | | 0 | 0 | | | | | |
| 5.0 GXiC SX | 270 php | 201 PkW | | | | | 0 | | | | | | |
| 5.7 GiC DP | 300 php | 224 PkW | 0 | 0 | | | 0 | 0 | 0 | 0 | 0 | | |
| 5.7 GXiC DP | 320 php | 239 PkW | 0 | 0 | | | | 0 | 0 | 0 | 0 | 0 | |
| 8.1 Gi DP (non catalyst) | 375 php | 280 PkW | 0 | 0 | | | | 0 | 0 | 0 | 0 | 0 | |
| 8.1 GiC DP | 400 php | 298 PkW | 0 | 0 | | | | 0 | 0 | 0 | 0 | 0 | |
| 8.1 GXi DP (non catalyst) | 420 php | 313 PkW | 0 | 0 | | | | 0 | 0 | 0 | 0 | 0 | |
| Twin 5.7 GiC DP | 300 php | 224 PkW | | | 0 | 0 | | | | | | | |
| Twin 5.7 GXiC DP | 320 php | 239 PkW | | | 0 | 0 | | | | | | | |
| Twin 8.1 Gi DP (non catalyst) | 375 php | 280 PkW | | | 0 | 0 | | | | | | | |
| Twin 8.1 GiC DP | 400 php | 298 PkW | | | 0 | 0 | | | | | | | |
| Twin 8.1 GXi DP (non catalyst) | 420 php | 313 PkW | | | 0 | 0 | | | | | | | |
| ENGINE OPTIONS | | | | | | | | | | | | | |
| Anti Corrosion System | | | 0 | 0 | 0 | 0 | 0 | 0 | 0 | 0 | 0 | 0 | 0 |
| Axius Premier (includes DTS) - Merc Twin | | | | | 0 | 0 | | | | | | | |
| DTS (Merc) | | | 0 | 0 | 0 | 0 | 0 | 0 | 0 | 0 | 0 | 0 | 0 |
| EVC (Volvo) | | | 0 | 0 | 0 | 0 | 0 | 0 | 0 | 0 | 0 | 0 | 0 |
| Joystick Sterndrive (includes EVC) - Volvo Twin | | | | | 0 | 0 | | | | | | | |
| Ocean-X (Volvo) | | | 0 | 0 | 0 | 0 | 0 | 0 | 0 | 0 | 0 | 0 | 0 |
| Seacore (Merc) | | | 0 | 0 | 0 | 0 | 0 | 0 | 0 | 0 | 0 | 0 | 0 |


2011 STANDARD & OPTIONAL EQUIPMENT

Consult your Cobalt dealer as equipment and specifications are subject to change without notice.

|  | 10 SERIES | | | BR SERIES | | | | | | |
|-----------------------------------------------------------------------------------|-----------|-----|-----|-----------|-----|-----|-----|-----|-----|-----|
| | 200 | 210 | 230 | 222 | 232 | 242 | 262 | 276 | 296 | 302 |
| CANVAS | | | | | | | | | | |
| Bimini Top with Stainless Adjustable Stanchions | O | O | O | O | O | O | O | O | O | O |
| Bow Tonneau Cover | O | O | O | O | O | O | O | O | O | O |
| Cockpit Tonneau Cover | O | O | O | O | O | O | O | O | O | O |
| Mooring Cover | O | O | O | O | O | O | O | O | O | O |
| DASH / INSTRUMENTATION | | | | | | | | | | |
| Accessory Power Plug - 12 Volt | S | S | S | S | S | S | S | S | S | S |
| Aluminum Dash Panels | S | S | S | S | S | S | S | S | S | S |
| Black Leather/Stainless Steering Wheel | S | S | S | S | S | S | S | S | S | S |
| Compass | O | | | | | | | | | S |
| Compass (digital) | | | | | | | | S | S | |
| Composite Helm Eyebrow with Custom Stitching | S | S | S | S | S | S | S | S | S | S |
| Depth & Water/Air Temp Gauge Pkg. | O | S | S | S | S | S | S | S | S | S |
| GPS/Plotter (touch screen in-dash) | O | O | O | O | O | O | O | | | |
| GPS Unit (color) In-Dash | | | | | | | | O | O | O |
| GPS/Radar Unit (requires arch) | | | | | | | | | | O |
| Hour Meter | S | S | S | S | S | S | S | S | S | S |
| Livorsi Engine Controls - Twin Engines Only | | | | | | | | | O | S |
| Rudder Indicator - Digital | | | | | | | | O | O | |
| Stainless Steel Switches | S | S | S | S | S | S | S | S | S | S |
| Windshield Wiper-Starboard | | | | | | | | | O | O |
| Wood Dash/Trim Package | | S | S | O | O | O | O | S | O | O |
| EXTERIOR | | | | | | | | | | |
| Anchor Locker | S | S | S | S | S | S | S | S | S | S |
| Bow Scuff Plate, Stainless Steel | S | S | S | S | S | S | S | S | S | S |
| Docking Lights-Stainless Steel | O | O | O | O | O | O | O | O | O | O |
| Extended Running Surface | S | S | S | S | S | S | S | S | S | S |
| Fender Clips w/Line (4) | O | O | O | O | O | O | O | O | O | O |
| Flagpole w/Flag | O | O | O | O | O | O | O | O | O | O |
| Flip Down Swim Step w/o Ladder | O | O | O | O | O | O | O | | O | O |
| Flip-Down Swim Step w/Ladder | | O | O | O | O | O | O | | O | O |
| Graphics - Molded in Gelcoat - 2 Color | S | S | S | S | S | S | S | S | S | S |
| Graphics - Molded in Gelcoat - 3 Color | O | O | O | O | O | O | O | O | O | O |
| Graphics - Molded in Gelcoat - Deck Stripe | | | | O | O | | | | | |
| Graphics - Molded in Gelcoat with WSS Applique | | | | | | | | | | |
| Midships Cleats | S | S | S | S | S | S | S | S | S | S |
| Motorbox Actuator | | | | O | O | O | O | S | S | S |
| Portal Lights-1 (head compartment w/screen) | | | | | | O | O | O | O | O |
| Ski Tow Eye - Stainless Steel | S | S | | | | | | | | S |
| Ski Pylon - Stainless Steel | | | S | S | S | S | S | S | S | |
| Retractable Dock Lines | | | | | | O | O | O | O | O |
| Stainless Steel Arch w/Bimini Top | | | | | | | | O | O | O |
| Stainless Steel Arch w/Hard Top | | | | | | | | | O | O |
| Stainless Steel Engine Vents | | S | S | S | S | S | S | S | S | S |
| Stainless Steel Tubular Platform Perimeter Rail | S | S | S | S | S | S | S | S | S | S |
| Stainless Steel Windshield | | | | | | | | | | O |
| Stainless Top Trim Windshield | S | | | S | S | S | S | S | S | |
| Swim Platform Transom Lighting | | O | O | | | O | O | O | O | O |
| Swim Platform, Extended w/Ladder | S | S | S | S | S | S | S | S | S | S |
| Teak Accent Package | | | | | | | | | O | O |
| Teak Swim Platform & Aft Walk-Thru | | | | | | | | O | | |
| Tower w/Bimini Top | O | O | O | O | O | O | O | | | |
| Tower w/Sunshade | | O | O | O | O | O | O | | | |
| Transom Shower | | O | O | O | O | O | O | O | O | O |
| Transom Storage/Ice Chest | | | | | | | | | | S |
| Transom Tilt Switch | O | O | O | O | O | O | O | O | O | |
| Underwater Lighting | | | | | | | | O | O | O |
| Wakeboard Racks w/Swivel (2) (requires tower) | O | O | O | O | O | O | O | | | |
| INTERIOR | | | | | | | | | | |
| Aft Sunpad w/ Walk Thru Transom | S | S | S | S | S | S | S | S | S | S |
| Aft Sunpad w/Adjustable Backrest | S | | | | | S | S | S | S | S |
| Aft Walk-Thru Carpet | O | O | O | O | O | O | O | O | S | S |
| Aft Walk-Thru Filler Cushion(s) | O | O | O | O | O | | | | O | |
| Aft Walk-Thru Gate | O | | | | | O | O | | | O |
| Air Compressor w/Holder | O | O | O | O | O | O | O | O | S | S |
| Bow Cushion Insert(s) | O | O | O | O | O | O | O | O | O | S |
| Bow Walk-Thru Doors | S | S | S | S | S | S | S | S | S | S |
| Carpet, 40 oz. Snap in with Neoprene Backing | S | S | S | S | S | S | S | S | S | S |
| Carpet Alternative, Sisal Sea Grass (Sand & Terra) | O | O | O | O | O | O | O | O | O | O |
| Carpet, Water Weave (Sand & Terra) | O | O | O | O | O | O | O | O | O | O |

2011 STANDARD & OPTIONAL EQUIPMENT




Consult your Cobalt dealer as equipment and specifications are subject to change without notice.

|  | 10 SERIES | | | BR SERIES | | | | | | |
|-----------------------------------------------------------------------------------|-----------|-----|-----|-----------|-----|-----|-----|-----|-----|-----|
| | 200 | 210 | 230 | 222 | 232 | 242 | 262 | 276 | 296 | 302 |
| INTERIOR (CONTINUED) | | | | | | | | | | |
| Cockpit Galley Unit | | | | | | | | | O | S |
| Cockpit Heater | | | | | | | | O | O | O |
| Dinette Table - Cockpit | O | O | O | O | O | O | O | O | O | S |
| Double Wide Helm Seat | | | | | | | | S | S | S |
| Faucet, Cockpit Sink | | | | | | | | O | | |
| Grey Water System | | | | | | | | O | O | O |
| Head w/Electric Porcelain Toilet | | | | | | O | O | O | | |
| Head w/Electric Porcelain Toilet w/Macerator | | | | | | O | O | O | | |
| Head w/Porta Potti | | | | | | O | S | S | | |
| Head w/Pump Out Porta Potti | | | | | | O | O | O | S | S |
| Head w/Pump Out Porta Potti, Macerator | | | | | | O | O | O | O | O |
| Head w/VacuFlush | | | | | | | | | O | O |
| Head w/VacuFlush, Macerator | | | | | | | | | O | O |
| Motorbox, Cushions (replaces Pillows) | | | | | | | | | O | |
| Passenger Seat Flip Backrest System | | | | | | | | S | S | S |
| Refrigerator | | | | | | | | | O | O |
| Remote Courtesy Lights w/Key Fob | O | O | O | O | O | O | O | O | O | O |
| Removable Ice Chest | S | | | | | | | | | |
| Removable Bow and Cockpit Carpet | S | S | S | S | S | S | S | S | S | S |
| Seat Covers, Terry Cloth | O | O | O | O | O | O | O | | | |
| Seating, Vara-Dense Comfort | S | S | S | S | S | S | S | S | S | S |
| Seating, Helm Flip Up | S | S | S | S | S | S | S | S | | S |
| Seating, Dual Flip Lip Buckets | | S | S | S | S | S | S | | | |
| Sink Console (Head Compartment) | | | | | | O | O | S | S | |
| Stainless Steel Foot Tread | | O | O | O | O | O | O | O | O | O |
| Trash Receptacle | | | | | | | S | S | S | S |
| STEREO / ENTERTAINMENT | | | | | | | | | | |
| AM-FM iPod Stereo w/6 Speakers | S | S | S | S | S | S | S | S | S | S |
| CD Changer (6 disc) | | O | O | O | O | O | O | O | O | O |
| iPod/MP3 Port | S | S | S | S | S | S | S | S | S | S |
| Premium Sound System (req. Dual Batt.) | O | O | O | O | O | O | O | O | O | O |
| Premium Sound System w/Transom Speakers | O | | | | | | | O | O | |
| Satellite Radio System w/6 month service | O | O | O | O | O | O | O | O | O | O |
| Stereo Remote, Dash | S | S | S | S | S | S | S | S | S | S |
| Stereo Remote, Transom | O | O | O | O | O | O | O | O | O | O |
| Tower Speakers, 1 pair (req. Premium Sound) | O | O | O | O | O | O | O | | | |
| STRUCTURE / SAFETY / PERFORMANCE | | | | | | | | | | |
| 10/5/3 Year Warranty Protection | S | S | S | S | S | S | S | S | S | S |
| Battery Charger - 110v or 220v | | | | | | | | | O | |
| Battery Switch - Dual | O | O | O | O | O | O | O | O | S | S |
| Battery Switch - Single | S | S | S | S | S | S | S | S | | |
| Captain's Call Exhaust | | O | O | O | O | O | O | O | O | O |
| Captain's Call Plus (w/Mufflers) | | O | O | O | O | O | O | O | O | O |
| Circuit Breaker Protected Electrical System | S | S | S | S | S | S | S | S | S | S |
| CE Requirements w/Auto Fire Extinguisher | O | O | O | O | O | O | O | O | O | O |
| Composite Floor | S | S | S | S | S | S | S | S | S | S |
| Composite Seat Bases | S | S | S | S | S | S | S | S | S | S |
| Composite Transom | S | S | S | S | S | S | S | S | S | S |
| Cruise Control (Perfect Pass) w/GPS | O | O | O | O | O | O | O | O | O | |
| Fiberglass Cockpit Liner | S | S | S | S | S | S | S | S | S | S |
| Fiberglass Stringer System | S | S | S | S | S | S | S | S | S | S |
| Fire Extinguisher, Automatic System | O | O | O | O | O | O | O | O | O | O |
| Fire Extinguisher, Manual | S | S | S | S | S | S | S | S | S | S |
| Ignition Safety Switch | S | S | S | S | S | S | S | S | S | S |
| Kevlar™ Reinforced Hull | S | S | S | S | S | S | S | S | S | S |
| Shore Power Kit-110 Volt w/battery charger* | | | | | | | | | | O |
| Shore Power Kit-220 Volt w/battery charger* | | | | | | | | | | O |
| Stainless Steel Windshield Braces | S | S | S | S | S | S | S | S | S | S |
| Through Prop Exhaust | S | S | S | S | S | S | S | S | S | S |
| Tool Kit | O | O | O | O | O | O | O | O | O | O |
| Trim Tabs | | | | O | O | O | O | O | O | O |
| Windlass w/Line, Chain & Anchor | | | | | | O | O | O | O | O |

*Shore Power package includes: hot water heater, stove, galvanic isolators, and battery charger

2011 STANDARD & OPTIONAL EQUIPMENT

Consult your Cobalt dealer as equipment and specifications are subject to change without notice.

| |  |  |  | | | | | | | |
|-------------------------------------------------|-----------------------------------------------------------------------------------|-----------------------------------------------------------------------------------|-------------------------------------------------------------------------------------|-----|--------|--------|--------|--------|--------|--------|
| | A25 | 243 | 303 | 323 | 210wss | 222wss | 230wss | 232wss | 242wss | 262wss |
| CANVAS | | | | | | | | | | |
| Bimini Enclosure Pkg. | | O | O | O | | | | | | |
| Bimini Top | O | O | O | S | | | | | | |
| Bow Tonneau Cover | O | | | | O | O | O | O | O | O |
| Cockpit Tonneau Cover | O | O | O | O | O | O | O | O | O | O |
| Mooring Cover | O | O | O | O | O | O | O | O | O | O |
| DASH / INSTRUMENTATION | | | | | | | | | | |
| Accessory Power Plug - 12 Volt | S | S | S | S | S | S | S | S | S | S |
| Aluminum Dash Panels | S | S | S | S | S | S | S | S | S | S |
| Black Leather/Stainless Steering Wheel | S | S | S | S | S | S | S | S | S | S |
| Compass | | | S | S | | | | | | |
| Compass (digital) | S | | | | | | | | | |
| Composite Helm Eyebrow with Custom Stitching | S | S | S | S | S | S | S | S | S | S |
| Depth & Water/Air Temp Gauge Pkg. | S | S | S | S | S | S | S | S | S | S |
| GPS/Plotter (touch screen in-dash) | O | O | | | O | O | O | O | O | O |
| GPS Unit (color) In-Dash (replaces compass) | | | O | O | | | | | | |
| GPS/Radar Unit (requires arch) | | | O | | | | | | | |
| Hour Meter | S | S | S | S | S | S | S | S | S | S |
| Livorsi Engine Controls | | | S | S | | | | | | |
| Rudder Indicator | O | | | | | | | | | |
| Stainless Steel Switches | S | S | S | S | S | S | S | S | S | S |
| VHF Radio Unit | | | O | O | | | | | | |
| Windshield Wiper-Starboard | | O | O | O | | | | | | |
| Wood Dash/Trim Package | S | O | O | S | | | | | | |
| EXTERIOR | | | | | | | | | | |
| Accessory Crossbar w/Cockpit Lighting | | | | | S | S | S | S | S | S |
| Anchor Locker | S | S | S | S | S | S | S | S | S | S |
| Black Chrome "Cobalt" Letters and Logo | | | | | S | S | S | S | S | S |
| Bow Scuff Plate, Stainless Steel | S | S | S | S | S | S | S | S | S | S |
| Docking Lights-Stainless Steel | O | O | O | O | O | O | O | O | O | O |
| Extended Running Surface | S | S | S | S | S | S | S | S | S | S |
| Fender Clips w/Line (4) | O | O | O | O | O | O | O | O | O | O |
| Fender Storage Lockers, Port & Stbd. | S | | | | | | | | | |
| Flagpole w/Flag | O | O | O | O | | | | | | |
| Flip Down Swim Step w/o Ladder | | O | O | O | O | O | O | O | O | O |
| Flip-Down Swim Step w/Ladder | | O | O | O | O | O | O | O | O | O |
| Graphics - Molded in Gelcoat - 2 Color | S | S | S | S | | | | | | |
| Graphics - Molded in Gelcoat - 3 Color | O | O | O | O | S | S | S | S | S | S |
| Graphics - Molded in Gelcoat - Deck Stripe | | | | | | O | | O | | |
| Graphics - Molded in Gelcoat with WSS Applique | | | | | S | S | S | S | S | S |
| Midships Cleats | S | S | S | S | S | S | S | S | S | S |
| Motorbox Actuator | S | S | S | S | | O | | O | O | O |
| Portal Lights-1 (head compartment w/screen) | | | | | | | | | O | O |
| Portal Lights-2 (1-head, 1-cabin aft) | | O | | | | | | | | |
| Ski Tow Eye - Stainless Steel | | | S | S | S | | | | | |
| Ski Pylon - Stainless Steel | S | S | | | | S | S | S | S | S |
| Retractable Dock Lines | O | O | O | O | | | | | O | O |
| Spotlight w/Helm Remote | | | O | O | | | | | | |
| Stainless Steel Arch w/Bimini Top | O | | O | O | | | | | | |
| Stainless Steel Arch w/Hard Top | | | O | O | | | | | | |
| Stainless Steel Bow Rails (10 inch) | | | O | O | | | | | | |
| Stainless Steel Engine Vents | S | S | S | S | S | S | S | S | S | S |
| Stainless Steel Tubular Platform Perimeter Rail | S | S | S | S | S | S | S | S | S | S |
| Stainless Steel Framed Windshield | | | O | O | | | | | | |
| Stainless Top Trim Windshield | S | S | | | | S | | | | S |
| Swim Platform - Hydraulic w/Ladder | O | | | | | | | | | |
| Swim Platform Transom Lighting | O | O | O | O | O | | O | | O | O |
| Swim Platform, Extended w/Ladder | S | S | S | S | S | S | S | S | S | S |
| Teak Accent Package | | | O | O | | | | | | |
| Stainless Steel Tower w/Bimini Top | | O | | | | | | | | |
| Tower Lights-4 | | | | | O | O | O | O | O | O |
| Transom Shower | O | O | O | O | O | O | O | O | O | O |
| Transom Storage/Ice Chest | | | S | S | | | | | | |
| Transom Tilt Switch | O | O | | | O | O | O | O | O | O |
| Underwater Lighting | O | | O | O | | | | | | |
| Wakeboard Racks w/Swivel (2) (requires tower) | | O | | | | | | | | |
| WSS Folding Tower w/Board Racks & Bimini | | | | | S | S | S | S | S | S |
| INTERIOR | | | | | | | | | | |
| Aft Sunpad w/ Walk Thru Transom | S | S | S | S | S | S | S | S | S | S |
| Aft Sunpad w/Adjustable Backrest | S | S | S | S | | | | | S | S |
| Aft Walk-Thru Carpet | S | S | S | S | O | O | O | O | O | O |
| Aft Walk-Thru Filler Cushion(s) | | | | | O | O | O | O | | |
| Aft Walk-Thru Gate | | O | O | O | | | | | O | O |
| Air Compressor w/Holder | O | O | S | S | O | O | O | O | O | O |
| Air Conditioning/Heating | | | O | O | | | | | | |
| Bow Cushion Insert(s) | O | | | | O | O | O | O | O | O |
| Bow Walk-Thru Doors | S | | | | S | S | S | S | S | S |

2011 STANDARD & OPTIONAL EQUIPMENT

Consult your Cobalt dealer as equipment and specifications are subject to change without notice.

| | A25 | 243 | 303 | 323 | 210wss | 222wss | 230wss | 232wss | 242wss | 262wss |
|----------------------------------------------------|-----|-----|-----|-----|--------|--------|--------|--------|--------|--------|
| INTERIOR (CONTINUED) | | | | | | | | | | |
| Cabin Filler Cushion | | | O | S | | | | | | |
| Cabin Galley Unit | | | S | S | | | | | | |
| Cabin Table/Filler Cushion Pkg. | | O | | | | | | | | |
| Carpet, 40 oz. Snap-in with Neoprene Backing | S | S | S | S | S | S | S | S | S | S |
| Carpet Alternative, Sisal Sea Grass (Sand & Terra) | O | O | O | O | O | O | O | O | O | O |
| Carpet, Water Weave (Sand & Terra) | O | O | O | O | O | O | O | O | O | O |
| Cedar-Lined Hanging Locker | | | S | S | | | | | | |
| Chiller Plate (cockpit) | | O | | | | | | | | |
| Cockpit Galley Unit | | | S | S | | | | | | |
| Cockpit Heater | | O | O | O | | | | | | |
| Dinette Table | O | O | S | S | O | O | O | O | O | O |
| Double Wide Helm Seat | | | S | S | | | | | | |
| Grey Water System | | | O | O | | | | | | |
| Head Compartment w/Shower | | | S | S | | | | | | |
| Head w/Electric Porcelain Toilet | | O | S | | | | | | O | O |
| Head w/Electric Porcelain Toilet w/Macerator | | O | O | | | | | | O | O |
| Head w/Porta Potti | | S | | | | | | | O | S |
| Head w/Pump Out Porta Potti | | O | | | | | | | O | O |
| Head w/Pump Out Porta Potti, Macerator | | O | | | | | | | O | O |
| Head w/VacuFlush | | | O | S | | | | | | |
| Head w/VacuFlush, Macerator | | | O | O | | | | | | |
| Microwave | | | S | S | | | | | | |
| Passenger Seat Flip Backrest System | S | | S | S | | | | | | |
| Refrigerator | | | O | S | | | | | | |
| Remote Courtesy Lights w/Key Fob | O | O | O | O | O | O | O | O | O | O |
| Removable Bow and Cockpit Carpet | S | | | | S | S | S | S | S | S |
| Removable Cockpit Carpet | | S | S | S | | | | | | |
| Seat Covers, Terry Cloth | | O | | | O | O | O | O | O | O |
| Seating, Vara-Dense Comfort | S | S | S | S | S | S | S | S | S | S |
| Seating, Helm Flip Up | S | S | S | S | S | S | S | S | S | S |
| Seating, Dual Flip Lip Buckets | | S | | | S | S | S | S | S | S |
| Sink Console (Head Compartment) | | O | | | | | | | O | O |
| Sink Console, Cockpit | | O | | | | | | | | |
| Stainless Steel Foot Tread | O | O | O | O | O | O | O | O | O | O |
| Trash Receptacle | | | | | | | | | | S |
| WSS Interior Upgrade (piping, monograms) | | | | | S | S | S | S | S | S |
| STEREO / ENTERTAINMENT | | | | | | | | | | |
| AM-FM iPod Stereo w/6 Speakers | S | S | S | S | S | S | S | S | S | S |
| Cabin Entertainment Package (TV/DVD) | | O | O | O | | | | | | |
| Cable TV Connection | | | O | O | | | | | | |
| CD Changer (6 disc) | O | O | O | O | O | O | O | O | O | O |
| iPod/MP3 Port | S | S | S | S | S | S | S | S | S | S |
| Premium Sound System (req. Dual Batt.) | O | O | O | O | O | O | O | O | O | O |
| Premium Sound System w/Transom Speakers | O | | | O | | | | | | |
| Satellite Radio System w/6 month service | O | O | O | O | O | O | O | O | O | O |
| Stereo Remote, Dash | S | S | S | S | S | S | S | S | S | S |
| Stereo Remote, Transom | S | O | O | O | O | O | O | O | O | O |
| Tower Speakers, 1 pair (req. Premium Sound) | | O | | | O | O | O | O | O | O |
| TV Antenna (Arch mounted) | | | O | O | | | | | | |
| STRUCTURE / SAFETY / PERFORMANCE | | | | | | | | | | |
| 10/5/3 Year Warranty Protection | S | S | S | S | S | S | S | S | S | S |
| Battery Charger | | O | | | | | | | | |
| Battery Switch - Dual | O | O | S | S | O | O | O | O | O | O |
| Battery Switch - Single | S | S | | | S | S | S | S | S | S |
| Captain's Call Exhaust | O | O | O | O | O | O | O | O | O | O |
| Captain's Call Plus (w/Mufflers) | O | O | O | O | O | O | O | O | O | O |
| Circuit Breaker Protected Electrical System | S | S | S | S | S | S | S | S | S | S |
| CE Requirements w/Auto Fire Extinguisher | O | O | O | O | O | O | O | O | O | O |
| Composite Floor | S | S | S | S | S | S | S | S | S | S |
| Composite Seat Bases | S | S | S | S | S | S | S | S | S | S |
| Composite Transom | S | S | S | S | S | S | S | S | S | S |
| Cruise Control (Perfect Pass) w/GPS | O | O | | | O | O | O | O | O | O |
| Driver's Rearview Mirror | | | | | O | O | O | O | O | O |
| Fiberglass Cockpit Liner | S | S | S | S | S | S | S | S | S | S |
| Fiberglass Stringer System | S | S | S | S | S | S | S | S | S | S |
| Fire Extinguisher, Automatic System | O | O | O | O | O | O | O | O | O | O |
| Fire Extinguisher, Manual | S | S | S | S | S | S | S | S | S | S |
| Generator (5kw) w/Sound Shield | | | O | O | | | | | | |
| Ignition Safety Switch | S | S | S | S | S | S | S | S | S | S |
| Kevlar™ Reinforced Hull | S | S | S | S | S | S | S | S | S | S |
| Shore Power Kit-110 Volt w/battery charger* | | | O | S | | | | | | |
| Shore Power Kit-220 Volt w/battery charger* | | | O | O | | | | | | |
| Stainless Steel Windshield Braces | S | S | S | S | S | S | S | S | S | S |
| Through Prop Exhaust | S | S | S | S | S | S | S | S | S | S |
| Tool Kit | O | O | O | O | O | O | O | O | O | O |
| Trim Tabs | O | O | O | S | | O | | O | O | O |
| Windlass w/Line, Chain & Anchor | | O | O | O | | | | | O | O |

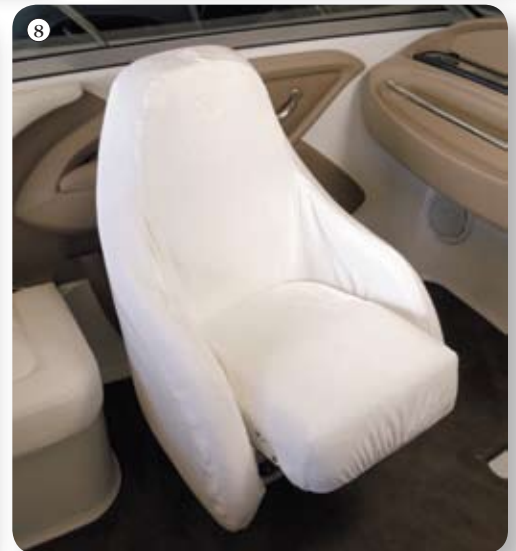
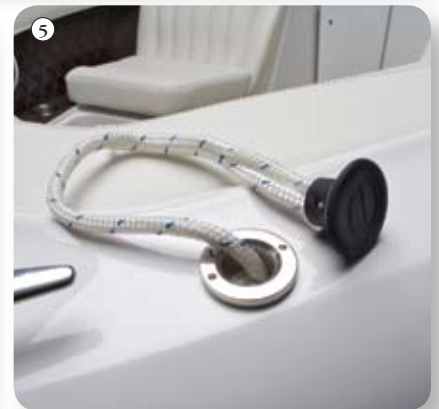
*Shore Power package includes: hot water heater, stove, galvanic isolators, and battery charger

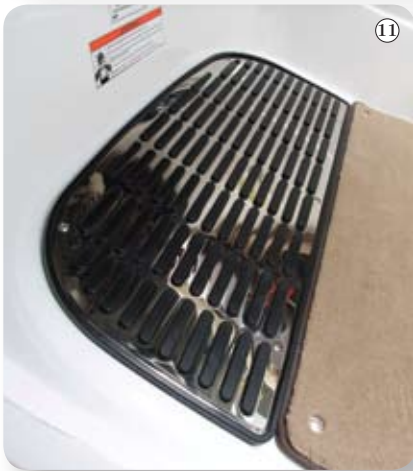
2011 OPTIONAL EQUIPMENT

Consult your Cobalt dealer as equipment and specifications are subject to change without notice.

A wide range of options are available to create a Cobalt that is uniquely your own. Consult your dealer for a complete selection to fit your specific boat model and needs. Some available options include:

1. Flip Down Swim Step - Patent Pending
2. Teak Trim Package (shown on model 296)
3. Stainless Steel Flagpole
- 4, 7. Fender Clips
5. Retractable Dock Lines
6. Transom Shower
8. Terry Cloth Seat Covers





- 9. Windlass w/Anchor, Chain & Line
- 10. Docking Lights, Stainless Steel
- 11. Foot Tread, Stainless Steel
- 12. Swim Platform Transom Lighting
- 13. Bimini Top
- 14. Bimini Enclosure
- 15. Water Sports Tower Bimini Top
- 16. Bow & Cockpit Tonneau Covers
- 17. Stainless Steel Arch Bimini Top
- 18. Mooring Cover

COBALT SPORTS

Lifestyle Accessories

SHOP ONLINE AT COBALTSports.COM

Choose from a wide selection of premium apparel and accessories for the COBALT enthusiast available online for your 24 hours a day convenience. Visit us at www.CobaltSports.com for seasonal specials and featured new merchandise.

Acrylic Glasses

Acrylic double walled glasses keep drinks colder longer and they will not sweat. A lifetime guarantee! And for a limited time we are offering your choice of the tall 16 oz. or the short style 12 oz. Item #2014 set of four \$50.00



Sueded Quarter Zip

This favorite sweatshirt is back in a new color. 80% cotton/20% polyester sueded for softness. Relaxed fit. Sizes M - XL in Black, Chalk or Cardinal. Item #2073 \$50.00



Newport Jacket

With a fresh new look, this jacket is the perfect choice for work or play. In Navy or Stone. S - XXL. Item #G2559 \$72.00



Washed Twill Cap

Keeping it simple, you will always look sharp in a new Cobalt cap! A classic six panel cut in wash twill, with bill accent color. Available in Navy or Stone. Item #G0838 \$20.00

SHOP ONLINE AT
COBALTSports.COM

Cobalt Boats • 1715 N 8th St • Neodesha, KS 66757
Tel. 800-468-5764 • Fax. 620-325-2361 • www.CobaltBoats.com

Copyright © 2011, all rights reserved • Printed in the U.S.A. • Specifications and equipment lists are subject to change without notice.

iPod™ is a trademark of the Apple Company • Kevlar™ is a registered trademark of the Dupont Chemical Company